



SYSTEM AND DATA RECOVERY CARD TECHNOLOGY

Introduction

The EZRecoveryCard can restore your hard disk drive to its original setup in just seconds. Even if your data is destroyed by viruses or accidental deletion, the EZRecoveryCard will recover and restore your system instantly. Problems with your CMOS? The EZRecoveryCard will not only notify you of a malfunction but also restores your original CMOS settings. The EZRecoveryCard are small PCI interface cards plugged into your computer's PCI expansion slot.

Function

- Support IBM 80386 PC or above
- Plug-and-Play installation, in less than 1 minute
- Compatible with Windows 3x/95/98/ME/NT/2000/XP/2003
- Supports all file systems (FAT16, FAT32, NTFS)
- Support ATA33/66/100 and SATA disk interface
- Support IDE, SCSI and SATA hard disk controller
- Support up to 256GB hard disk
- Support up to 11 partitions in one primary hard disk drive
- Support multi-boots and third party multi-boot software
- CMOS protection and recovery and hard disk parameter recovery

Features

- Takes virtually no disk space
- Invisible to end-user, risk of tampering is minimized
- Holds no data on card
- Built in driver for most operating system (Win NT, 2000, XP, 2003 require a supplied driver)
- Auto/Manual recovery modes selection
- Instant protection after the installation process
- Rapid update of protected disk image
- Guards against accidental deletion or corruption of files, sudden power loss, hacking or tampering, operation system crashes, configurations changes, Windows registry crashes, power failure, Corrupted files, lost CMOS setup data, changing system settings, Trojans, worms and Cookies
- Prevents virus infection and corruption
- Protects against all software based changes



SYSTEM AND DATA RECOVERY CARD TECHNOLOGY

Definition of terms

Protected Mode : Any changes made to this partition are temporary. When performing a **Recover System** function (press hotkey <9> in hotkeys menu or according to Restore Interval), all changes will be discard. The **Keep Mode**, also called **Boot Without Recovery**, (**Ctrl-Enter** in Hotkeys Menu) function will retain all changes made during the previous session upon rebooting. To retain all changes in **Protected Mode**, use the Backup System (hotkey <6>) function. General operators such as students are recommended to use this mode.

Supervisor Mode : All changes made to this partition are retained. Hence, there is no protection available even if the drive is set to be protected.

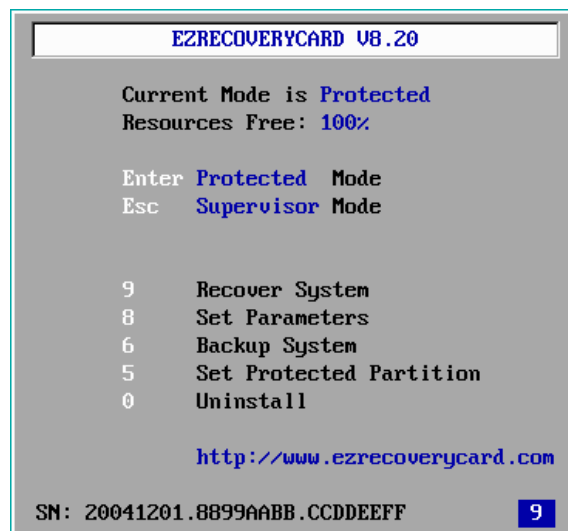
Backup System : If useful data are created under protected mode and need to be saved, you can perform this operation (press this hotkey <6>) to update the changes you made during last session. **Never interrupt a <Backup system> process or you may lose all you data. With the recommended parameter, always (sure or not sure) reboot the computer before doing the <Backup system>.**

Recover System : No matter how do you set the parameter, you could recover data by pressing this hotkey <9>.

Manual with password : If you select this item, you have to input password after pressing <9> hotkey or <6> hotkey . Otherwise, you don't need password to recover system or backup system.

Hotkeys Menu

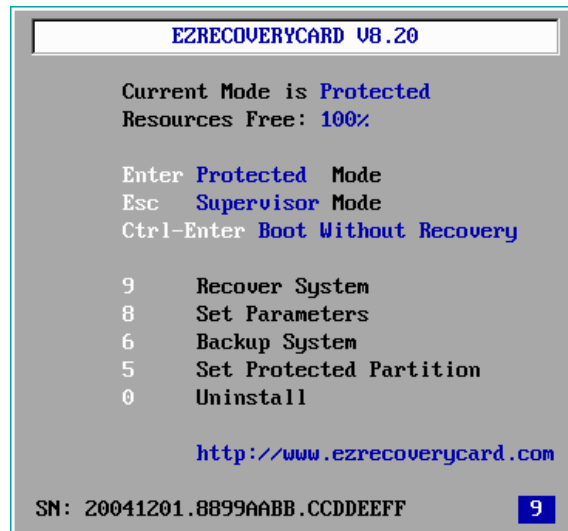
When booting after system POST with EZRecoveryCard installed completely, the Hotkeys Menu will appear :



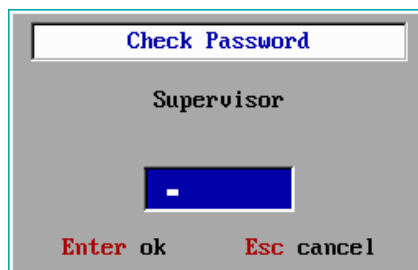


SYSTEM AND DATA RECOVERY CARD TECHNOLOGY

By checking **Boot without recovery** in set parameter menu, the following screen will show instead :



- By pressing any <Arrow> keys could stop the time counting.
- Press <Enter> key, you will enter protected mode, in this mode, all changes in the protected partitions will be protected.
- Press <Esc> key, the following screen will appear :



After inputting the correct password, press <Enter> key, the next screen will show :



- Press **Yes**, you will enter in Windows.

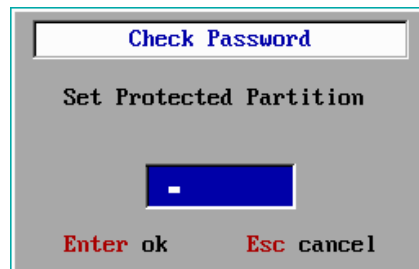


SYSTEM AND DATA RECOVERY CARD TECHNOLOGY

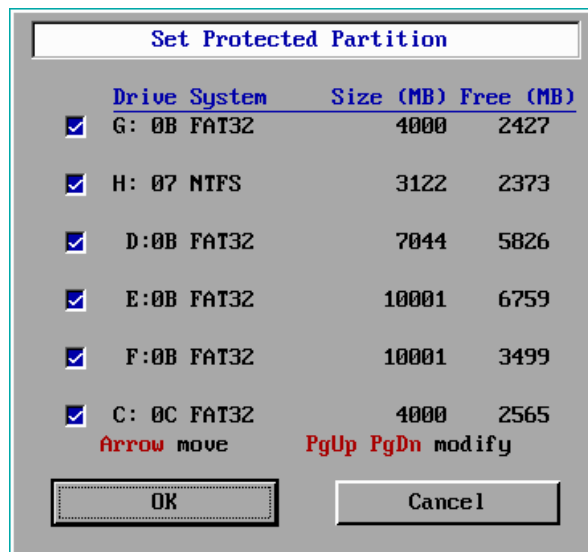
- Press Ctrl-Enter, you will enter into **Keep Mode**, it will not check the recovery interval, Even if the recovery interval is <Every 1 boot>, **Keep Mode** keep data in the status of last session.

Notice : If user press **Ctrl-Enter** to use **Boot Without Recovery**, then all changed data will be temporary saved in HDD. If you want to enter into **Supervisor Mode** in next reboot, all changes will be recovered.

- Press <5> hotkey to enter **Set Protected Partition** menu, in which you could set protected or unprotected for each drive
- After pressing <5> hotkey, the following screen will appear :



- After inputting the correct password, press <Enter> key to enter Set Protected Partition menu as followed :

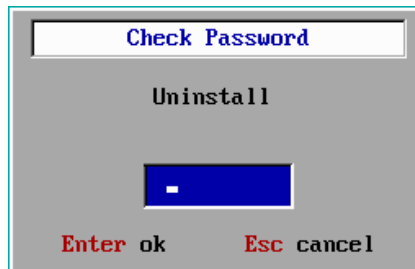


- All drive partition is protected by default.
- Press <Tab> or <Arrow> to move and press <Space Bar> to put a check or uncheck for every drive.
- If there a check, this partition will be protected, otherwise will not be protected.



SYSTEM AND DATA RECOVERY CARD TECHNOLOGY

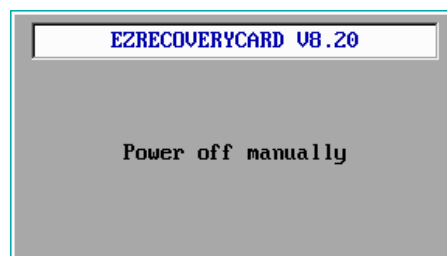
- Press <0> hotkey to uninstall the EZRecoveryCard.
- After pressing <0> hotkey, the following screen will appear :



- after inputting the correct password, press <Enter> key, the following screen will appear :



- If you click Yes, the EZRecoveryCard will automatically delete all the installation information, then the following screen appears:

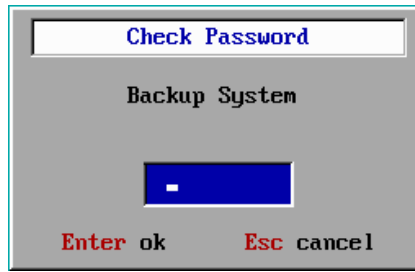


Note : By uninstalling the EZRecoveryCard, the last **Backup System** image will be restored.

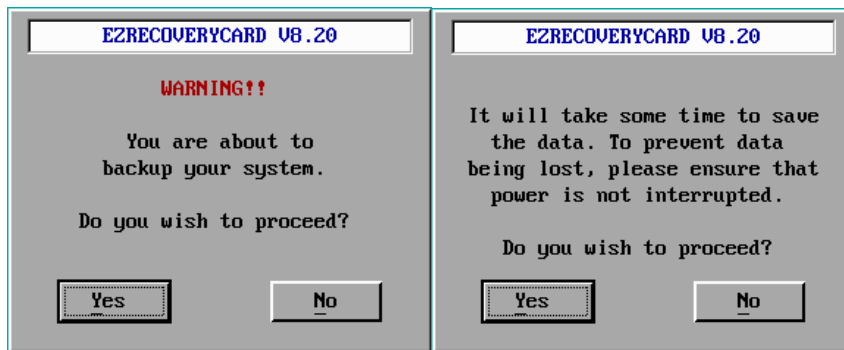


SYSTEM AND DATA RECOVERY CARD TECHNOLOGY

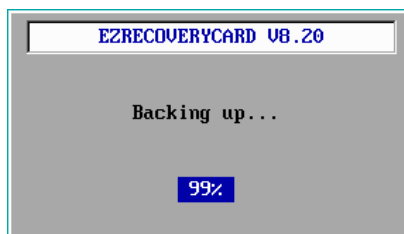
- Press <6> hotkey to backup the changes you made after last backup.
- After pressing <6> hotkey, the following screen will appear :



- After inputting the correct password, press <Enter> key, the following screen will appear :



- Press <Yes>, the following screen will appear :



Never interrupt a <Backup system> process or you may lose all you data. With the recommended parameter, always (sure or not sure) reboot the computer before doing the <Backup system>. It is recommended to do a <Backup system> for every application software that you have installed successfully.

- Then the computer will automatically reboot.



SYSTEM AND DATA RECOVERY CARD TECHNOLOGY

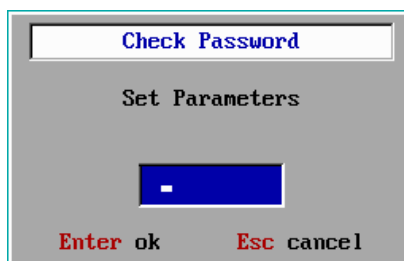
- Press <9> key to recover the changes. After pressing <9> key, the following screen will appear :



- After inputting the correct password, press <Enter> key, the following screen will appear :



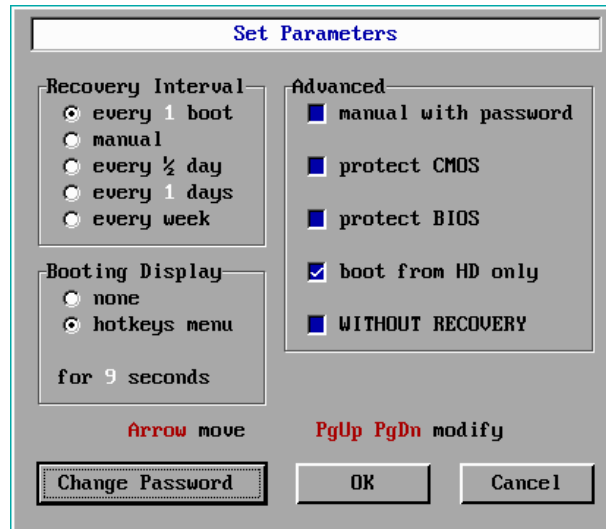
- After pressing <Yes>, you will enter into Windows with all changed data will be recovered.
- Press <8> hotkey to enter **Set Parameters** menu, in which you could set the parameters of EZRecoveryCard.
- After pressing <8> hotkey, the following screen will appear :



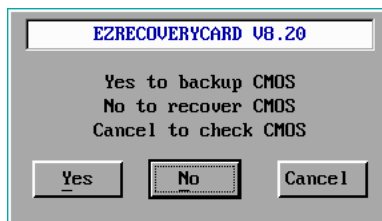


SYSTEM AND DATA RECOVERY CARD TECHNOLOGY

After inputting the correct password, press <Enter> key to enter Set Parameter menu as followed :



- The default settings are as the above settings.
- You could use <Tab> or <Arrow> key to move from one item to another, press <SpaceBar> or <PgUp> / <PgDn> key to modify the setting.
- You could set the recover interval from **every 1-99 boot**, or **every 1/2 day**, **every 1-99 days**, or **every week**, or **manual**.
- If you put a check on the item of **manual with password**, that means you have to input password when you press <9> hotkey to recover data; otherwise, you don't need it.
- If you put a check on the item of **protect CMOS**, that means the setting of CMOS is protected. If there are any changes for the setting of CMOS, the following screen will appear :



Press **Yes**, the changes of CMOS will be saved.

Press **No**, the changes of CMOS will be recovered.

Press **Cancel**, the computer will reboot 3 times, you could make any change to CMOS during the 3 reboots, and all changes will be saved permanently.

- If you put a check on the item of **protect BIOS**, the **system BIOS** is protected.
- If **boot from HD only** is check, that means the computer has to boot from hard disk.
- If you choose **Booting Display** as none, that means when the computer booting, there will be no any EZRecoveryCard Hotkeys menu screen and the computer will boot in Windows. To get in Hotkeys menu, when after computer **POST** execute <Ctrl-M> key while holding the control key.



SYSTEM AND DATA RECOVERY CARD TECHNOLOGY

- If hotkeys been checked, the hotkeys menu will appear when booting computer for a determinate time from 15 seconds to 1 second, the default is 9 seconds. You could freeze the time by pressing <Arrow> key.

It is recommended to set parameters as follow :

Recovery Interval : **every 1 boot**

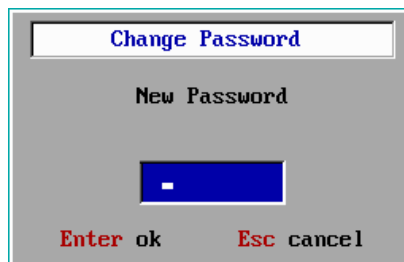
Booting Display : **hotkeys menu for 5 seconds**

Advanced : **manual with password, protect CMOS, boot from HD only and WITHOUT RECOVERY**

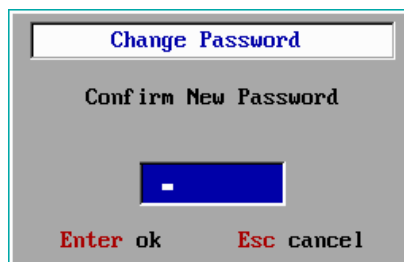
Modifying the password

The default password is function in case sensitive.

Press **Change Password** in the Set Parameters menu, the following screen will appear :



After inputting the new password, press <Enter> key, the following screen will appear :



Input the new password again, then press <Enter> key, the following screen will appear :



Press **OK**, the password is modified now.

If the 2 passwords you enter are not matched, or you pressed <Esc> key, a screen will follow that indicate that the **password is not changed**.